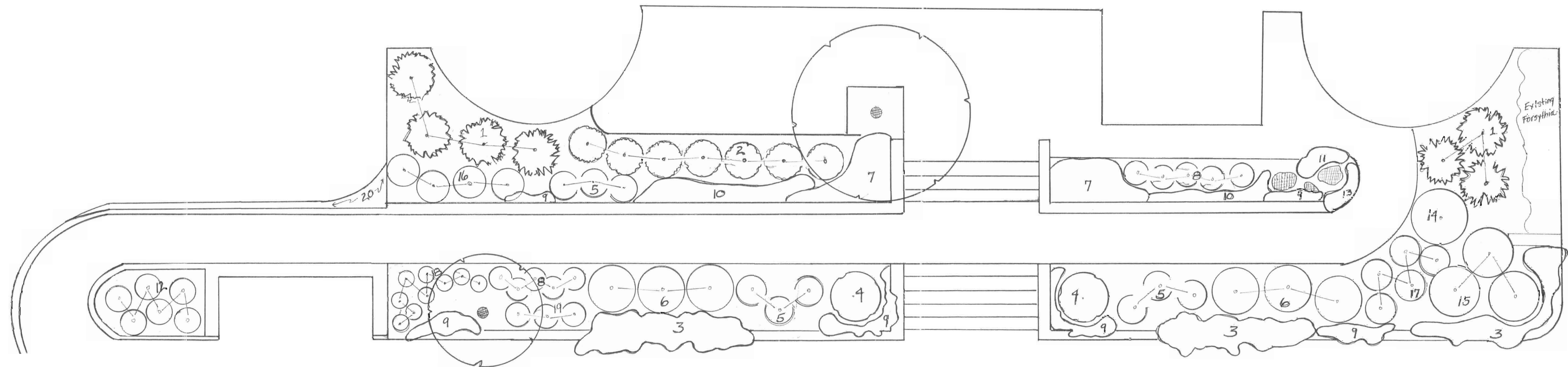


READING PUBLIC LIBRARY

CELEBRATION GARDEN



CELEBRATION GARDEN

PLANT LIST

| Plant Name | Quantity | Plant Name | Quantity |
|--|----------|---|----------|
| 1. Juniperus chinensis 'Hetzii' (Columnar Juniper) | 7 | 11. Iris siberica 'Caesar's Brother' (Siberian Iris) | 3 |
| 2. Ilex glabra 'Densa' (Dense Inkberry) | 7 | 12. Amsonia hubrechtii (Bluestar) | 6 |
| 3. Juniperus conferta 'Blue Pacific' (Creeping Juniper) | 18 | 13. Calluna vulgaris (Heather) | 5 |
| 4. Ilex meserveae 'Blue Princess' (Blue Princess Holly) | 2 | 14. Syringa patula 'Miss Kim' (Miss Kim Lilac) | 1 |
| 5. Pennisetum alopecuroides (Fountain Grass) | 9 | 15. Syringa meyeri 'Palibin' (Dwarf Korean Lilac) | 3 |
| 6. Cornus alba 'Bairdalo' (Ivory Halo Redtwig Dogwood) | 6 | 16. Caryopteris clandonensis (Blue Mist Shrub) | 4 |
| 7. Hemerocallis 'Rosy Returns' (Daylily) | 28 | 17. Panicum virgatum 'Northwind' (Tall Switch Grass) | 5 |
| 8. Calamagrostis acutiflora 'Karl Foerster' (Reed Grass) | 10 | 18. Yucca filamentosa 'Golden Sword' (Variegated Yucca) | 9 |
| 9. Phlox subulata 'Emerald Blue' (Creeping Phlox) | 40 | 19. Weigela florida 'Midnight Wine' | 3 |
| 10. Rudbeckia fulgida 'Goldsturm' (Black Eyed Susan) | 16 | 20. Ajuga reptans 'Burgundy Glow' (Bugleweed) | 4 trays |

DESIGN OBJECTIVES

Plants were chosen for this garden because of the following characteristics:

- | | |
|--------------------------------------|-------------------------------|
| Low maintenance | Non-invasive |
| Drought & salt tolerance | Multiple seasons of interest |
| Suited to sunny & windy conditions | Attractive foliage & bark |
| Tolerant of poor soils | Proper scale for the building |
| Plants not overly attractive to bees | Repetition of form and color |

LANDSCAPE PLAN PREPARED BY

Lauri Johnson
Garden Rhythms Design, Reading, MA
781-942-8732

SPRING 2009

In Honor of
The Reading Garden Club's
50th Anniversary