

DEAF & HARD OF HEARING INFO - CORONAVIRUS

- ▶ **Commonwealth of Massachusetts**
<https://mass.gov/covid19>
- ▶ **Executive Office of Health & Human Services**
<https://mass.gov/eohhs>
call: Dial 211
- ▶ **Massachusetts Commission for the Deaf and Hard of Hearing**
<https://mass.gov/mcdhh>
email: MCDsafety@mass.gov



PREVENTING ILLNESS



GET MEDICAL HELP



PREFERRED METHOD OF COMMUNICATION



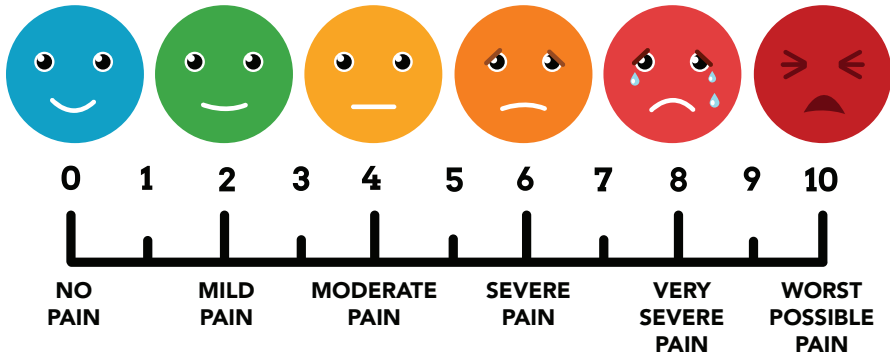
QUICK COMMUNICATION



TIPS FOR HEALTH PROVIDER

- ▶ Get the person's attention and make eye contact
- ▶ Repeat, rephrase, or write down your request
- ▶ Ask and/or indicate before touching the person
- ▶ Ask the person their preferred method of communication
- ▶ Minimize the number of people interacting with the patient
- ▶ Know that hearing aids/cochlear implants may improve hearing, but a person may still benefit from an assistive listening device and still may not understand all that you say.

HOW DO YOU FEEL?



HOW LONG HAVE YOU HAD SYMPTOMS?

▶ MINUTES

▶ HOURS

▶ DAYS

▶ WEEKS

▶ MONTHS

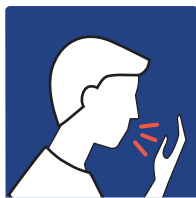
▶ YEARS



SITUATION, HISTORY & SYMPTOMS



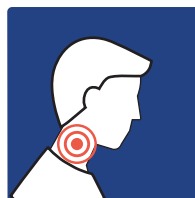
FEVER



COUGH



SHORT OF BREATH



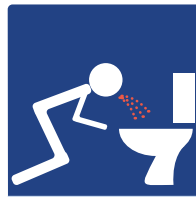
SORE THROAT



HEADACHE



WEAR A MASK



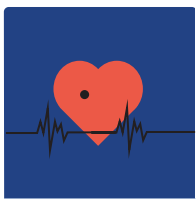
VOMITING



DIARRHEA



BLOOD PRESSURE



HEART DISEASE



TRAVEL HISTORY

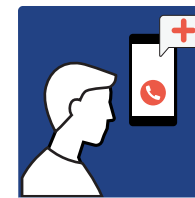


SICK FAMILY MEMBER

TREATMENT & CARE



MEDICAL STAFF



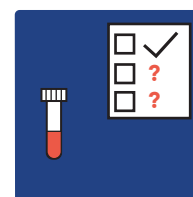
CONTACT DOCTOR



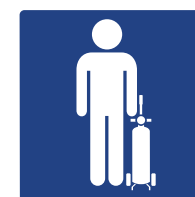
AMBULANCE



HOSPITAL



MEDICAL TEST



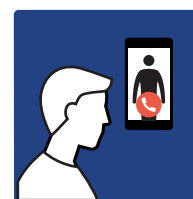
OXYGEN



INHALER



MEDICINE



CONTACT FAMILY



APPOINTMENT



STAY HOME



THROW AWAY TISSUES
CLEAN HANDS

▶ DEVELOPED BY THE MASSACHUSETTS COMMISSION FOR THE DEAF AND HARD OF HEARING ▶ [HTTPS://MASS.GOV](https://mass.gov)